



-

Y

2016

- 1.
- 2.
- 3.
- 4.
- 5.
- 6.
- 7.
- 8.
- 9.
- 10.
- 11.
- 12.

1.

98.445

16,58%

2014 51,07

500 80%

81,5 , 78 84,6
1,2

2014

1000 mm

1800 mm.

()

2013

. Park Geun Hye.

17

:

- Ministry of Strategy and Finance
 - National Tax Service
 - Korea Customs Service
 - Public Procurement Service
 - Statistics Korea
- Ministry of Science, ICT and Future Planning
 - Includes Korea Post (the postal service in the Republic of Korea).
- Ministry of Education
- Ministry of Foreign Affairs
- Ministry of Unification
- Ministry of Justice
 - Prosecution Service
- Ministry of National Defense
 - Military Manpower Administration
 - Defense Acquisition Program Administration
- Ministry of Security and Public Administration
 - Korean National Police Agency
 - National Emergency Management Agency
- Ministry of Culture, Sports and Tourism
 - Cultural Heritage Administration
- Ministry of Agriculture, Food and Rural Affairs
 - Rural Development Administration

- Korea Forest Service
- Ministry of Trade, Industry and Energy
 - Small and Medium Business Administration
 - Korean Intellectual Property Office
- Ministry of Health and Welfare
- Ministry of Environment
 - Korea Meteorological Administration
- Ministry of Employment and Labor
- Ministry of Gender Equality and Family
- Ministry of Land, Infrastructure and Transport
 - Multifunctional Administrative City Construction Agency
- Ministry of Maritime Affairs and Fisheries
 - Korea Coast Guard

:

- Board of Audit and Inspection
- National Intelligence Service
- Korea Communications Commission
- National Security Council
- National Unification Advisory Council
- National Economic Advisory Council
- Presidential Advisory Council on Science and Technology
- Ministry of Government Legislation³¹
- Ministry of Patriots and Veterans Affairs
- Ministry of Food and Drug Safety
- Fair Trade Commission
- Financial Services Commission
- Anti-Corruption and Civil Rights Commission
- Nuclear Safety and Security Commission
 - National Human Rights Commission of Korea

,

9 , : Gyeonggi, Gangwon, South Chungcheong, North Chungcheong, South Jeolla, North Jeolla, South Gyeongsang, North Gyeongsang Jeju. 10,4 , Busan (3,6), Inchon (2,7), Daegu (2,5), Daejeon (1,5), Gwangju (1,4), Ulsan (1,1). 20 .

..

Daejong Jeoson õ ö. 2
 . . Koguryo, Paekche Silla,
 600 . . Silla.
 Koguryo Paekche (600 .). 9 Silla
 Koryo,
 1259. 1932 Choson.

1910

1945,

(1947).

1948,

Syngman Rhee,
1950

(1950-1953).

(Hangeul)

15

$\frac{1}{4}$, 8%, 0,8% . \emptyset $\frac{1}{4}$,
().

2.

+82,

(0).

: 2, Busan 51, Taegu 53, Taejon 42, Inchon 32

Kwangju 62.

() : 1/1, 1/3,
5/4, 1/5, 5/5, 6/6,
8 4 17/7, 15/8, Chuseok (8, 6/6,
) 15 8
3/10 (,
Dangun 2.333 . .), 25/12.
10:30 . . 7:30 . . 9 . . 6 6 . .
9 . ., 9 . .
9:30 . . 4:30 . .
(-). 9 . -6 . .,
- 9 . -5 . .

3.

93,9% 2015 \$ 1,062.7

(Hyundai, Daewoo, Samsung, . . .),

(Hyundai, Hanjin).

(Korea Development Bank, Korea Export Import Bank)

. H

Hanjin

	2012	2013	2014	2015
()	1,222	1,305	1,410	1,132
()	1,235	1,315	1,416	1,383
()	992	1,056	1,134	1,108
%	2.3	2.9	3.3	2.6
	24,445	25,993	27,983	27,214
	24,696	26,179	28,071	27,340
	13,670	14,704	15,922	15,524
%	3,2	3,1	3,4	3,2
%	2,2	1,3	1,3	0,7
()	603.5	618.2	613	548.8
()	554.1	535.4	524.1	428.5
()	49.4	82.8	88.9	120.3

[Type text]

()	50.8	81.1	84.4	105.9
(%)	1,6	0,4	2	2.4
(%)	34,8	36,2	36.4	37,9
()	408.9	423.5	424.4	395.4
(%)	33,4	32,5	33.9	34.9
()	855.2	930.6	1,030.7	1,062.7
(%)	2.2	2.2	2	2.4
(%)	1.9	1.9	1.7	2.2
(%)	3.4	3.3	3	3.4
(%)	-0.5	3.3	3.4	3.8
(.)	-5.2	-6.5	-3.7	-15.7
(.)	-7.2	-7	-5.4	-9.7
(.)	20.6	21.6	23.2	25
()	13.4	14.6	17.8	15.3
Won/USD	1,127	1,095	1,053	1,132
(.)	327	346.5	363.6	368

:

()

Won

	2012	2013	2014	2015	%
	707,614	727,800	748,907	771,212	49.5%
	204,324	214,467	224,045	237,135	15.2%
	407,307	418,289	432,247	453,290	29.1%
	19.7	-2.3	1.8	-9.3	0.0%
	776,062	770,115	752,062	747,134	47.9%
	737,572	698,937	672,822	669,058	42.9%
	0.0	0.0	0.0	-2.2	0.0%
	1,377,457	1,429,445	1,486,079	1,558,592	100.0%

: Bank of Korea

Won

()	2012	2013	2014	%
	30,775	30,437	31,710	2.1%
	2,279	2,471	2,518	0.2%
	388,010	403,657	410,214	27.6%
	16,101	17,234	17,610	1.2%
	20,540	20,935	21,586	1.5%
	10,338	10,752	10,689	0.7%

[Type text]

	9,752	10,195	9,222	0.6%
	50,669	52,939	53,947	3.6%
	10,408	10,823	11,659	0.8%
	32,587	32,137	32,661	2.2%
	29,007	29,538	30,702	2.1%
	33,134	34,426	34,852	2.3%
	100,575	108,118	108,221	7.3%
	7,036	7,210	7,149	0.5%
	62,493	63,643	65,967	4.4%
	5,372	5,707	5,948	0.4%
	26,178	30,239	38,115	2.6%
	59,959	64,251	66,955	4.5%
	25,466	25,469	24,955	1.7%
	3,754	3,872	4,165	0.3%
	744,254	772,184	804,774	54.2%
	146,808	150,252	152,118	10.2%
Wholesale and retail trade	114,384	116,480	116,926	7.9%
	32,424	33,772	35,193	2.4%
	43,571	46,772	50,190	3.4%
	75,809	72,478	75,558	5.1%
	98,924	103,527	108,005	7.3%
	48,774	50,589	52,079	3.5%
	15,906	16,394	16,703	1.1%
	32,868	34,195	35,376	2.4%
	88,828	94,758	99,799	6.7%
	88,655	93,776	98,280	6.6%
	68,546	71,599	74,294	5.0%
	50,031	52,852	57,178	3.9%
	34,309	35,580	37,274	2.5%
	1,251,455	1,303,238	1,354,286	91.2%
	126,001	126,207	130,792	8.8%
	1,377,457	1,429,445	1,485,078	100.0%
	14,139	10,199	11,515	0.8%
	1,391,596	1,439,644	1,496,593	100.8%

: Bank of Korea

2013

ΑΕΠ		2010	Ποσοστό % του ΑΕΠ
	1,427,300,654	1,375,552,868	100.0%
Seoul	320,230,208	308,556,237	22.4%

[Type text]

Busan	69,986,887	67,852,325	4.9%
Daegu	44,845,694	42,511,159	3.1%
Incheon	64,677,934	63,655,333	4.5%
Gwangju	29,646,229	28,593,976	2.1%
Daejeon	32,229,626	29,474,876	2.3%
Ulsan	67,701,404	69,965,768	4.7%
Gyeonggi-do	313,243,261	296,244,264	21.9%
Gangwon-do	34,789,957	33,051,019	2.4%
Chungcheongbuk-do	46,735,318	45,917,380	3.3%
Chungcheongnam-do	97,183,921	96,826,423	6.8%
Jeollabuk-do	42,252,801	39,108,772	3.0%
Jeollanam-do	61,095,327	62,131,697	4.3%
Gyeongsangbuk-do	88,552,710	85,487,732	6.2%
Gyeongsangnam-do	101,015,865	93,537,662	7.1%
Jeju-do	13,113,512	12,633,870	0.9%

: Korea Statistical Information Service

4.

2009

\$ 3,2 . 2013, 884 ., 0, ., 2015 25.2%

\$ 1,3 .

, 2015 \$ 1.1 , 35.8%

80,1% . , , ,

25%

, 2014

363,9 ., 88.5% . To 2015 39.9%

\$ 247.3 .

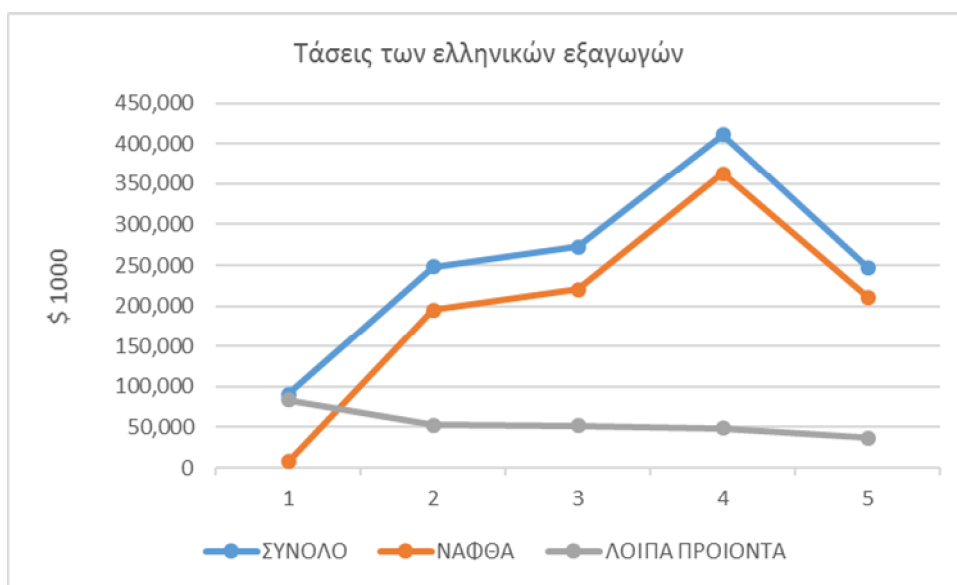
	2011	2012	2013	2014	2015	
--	------	------	------	------	------	--

[Type text]

	1000 \$	1000 \$	1000 \$	1000 \$	1000 \$	%
	90,891	247,827	272,244	411,435	247,299	-39.9
	7,692	195,308	220,622	362,944	210,827	-41.9
	83,199	52,519	51,622	48,491	36,472	-24.8

: Korea International Trade Association

2015 \$ 36.5 .. 24.8%



2015

	2011	2012	2013	2014	2015	
	1000 \$	1000 \$	1000 \$	1000 \$	1000 \$	%
	90,891	247,827	272,244	411,435	247,299	-39.9
	1,571	2,406	3,191	5,097	3,554	-30.3
	124	506	883	3,398	2,468	-27.4
	11,235	5,870	9,202	7,922	2,396	-69.7
	372	706	1,451	1,132	1,979	74.9

[Type text]

	11,188	5,392	6,720	2,979	1,766	-40.7
			238	2,836	1,290	-54.5
	586	473	587	780	1,209	54.9
	0	2,253	1,354	2,464	1,054	-57.2
	152	599	252	686	1007	158.1

: Korea International Trade Association



1/7/2011,

:

•

(1974).

•

&

(1987).

•

(1967).

•

(1974).

-
- (1979)
- (1979).
- (20-3-1995,
-)
- (25-1-1995).
-
- 2006 , 4-9-
- 1-7-2010.
-
- 2006 , 4-9-
- 1-7-2010.
-
-

5.

1 2011, ,

: 14 , 7

, 4 ,

,

-
- 5 98,7%
-

- 1,6
- 7
- ,
- , :
-
-
-
-
- -
- (- Technical
Barriers to Trade), (conformity
assessment procedures)
- (good regulatory practice).
- ,
- ,
-
- :
- ,
- ,
-
- ,
-
- WTO-GATS
- , , , ,
- , , , ,
- 9 (Build-Operate-Transfer),

•

,

(TRIPS ó Trade-Related Aspects of Intellectual Property Rights).

,

,

•

162

6

•

,

,

•

(6)

•

•

•

•

,

,

60

,

,

,

:

:

•

•

•

•

•

•

:

•

•

•

•

•

•

•

- 1.
- 2.
- 3.

	1	2011,	
			«
(origin declaration).			»
		«	» (approved
exporter)			
	«	»,	
H	Invoice Declaration,		

	:		
«The exporter of the products covered by this document (customs authorization Noí .. (_____)) declares that , except where otherwise clearly indicated, these products are of í í (_____)»			
	! _____		
		6000	,
			,
			,
			,
			,
			,
			,
			,
			,

[Type text]

HSK		%	
<u>030345</u>	,	10	
<u>0304295000</u>	,	10	4
<u>0406</u>		36	9 2- -1 4560 . 16 .
<u>0409000000</u>		243% 1,864 won/kg,	10 2- -1 50 75 .
<u>0511996000</u>		8	
<u>0802500000</u>		30	
<u>0806200000</u>		21	
<u>1005909000</u>		328	14
<u>1207200000</u>		3	

[Type text]

<u>130190</u>		3	
<u>1509100000</u>		8	6
<u>1509900000</u>		8	
<u>180610</u>		8	
<u>180620</u>	2	8	6
<u>180631</u>		8	6
<u>180632</u>		8	6
<u>1806901000</u>		8	6
<u>1806909090</u>		8	
<u>2005700000</u>		20	6
<u>2008701000</u>		50	8
<u>2008209000</u>		45	6
<u>200911</u>		54	4
<u>200912</u>	Brix 20	54	6
<u>200919</u>	,	54	4
<u>220110</u>		8	6

[Type text]

<u>2204</u>		15	
<u>220900</u>		8	6
<u>2401</u>		20	11
<u>2501009010</u>		8	
<u>2501009020</u>		8	4
<u>2501009090</u>	,	8	4
<u>251110</u>	()	3	
<u>2515111000</u>		3	
<u>2515112000</u>		3	
<u>251512</u>		3	
<u>2515121000</u>		3	
<u>2515122000</u>		3	
<u>251910</u>	() ,	3	
<u>2710114000</u>		0	
<u>290545</u>		8	4
<u>300190</u>		0	

[Type text]

<u>3004</u>		8	1) . 2) 4
<u>320414</u>		8	
<u>320416</u>		8	
<u>3301</u>	(ginseng)	8	
<u>330290</u>	()	8	4
<u>3304</u>		8	1) . 2) 4 . 3) 6
<u>3305</u>		8	1) . 2) 4 . 3) 6
<u>3307</u>	(, , , 6,5%).	8	
<u>3401</u>		8 6,5	1) . 2) 4 . 3) 6
<u>3824909010</u>	31	6,5	
<u>39</u>		8 6,5	1) . 2) 4 . 3) 6
<u>392010</u>	,	6,5	4

<u>3926909000</u>	3901 (3914) .	8	4
<u>400400</u>		3	
<u>4004000000</u>		3	
<u>420310</u>		13	
<u>430211</u>) (5	
<u>430219</u>	()	5	
<u>430220</u>		5	
<u>430230</u>	()	5	
<u>4303</u>	,	16	
<u>470730</u>		0	
<u>5201</u>		0	
<u>5204</u>		8	
<u>61</u>		13 8	
<u>611020</u>		13	
<u>62</u>	()	13 8	
<u>6201</u>	()	13	
<u>6202</u>	()	13	

[Type text]

<u>6802211000</u>		8	6
<u>6802212000</u>		8	
<u>711311</u>	()	8	6
<u>71131910</u>	()	8	4
<u>71131920</u>	()	8	6
<u>71131990</u>) (8	6
<u>7113201000</u>	()	8	
<u>7113202000</u>) (8	4
<u>7113203000</u>	()	8	4
<u>7113209000</u>	()	8	
<u>740400</u>		0	
<u>760200</u>		0	
<u>7606120000</u>	, 0,2 mm	8	4
<u>8516601000</u>		8	
<u>890690</u>		0	

6.

[Type text]

Korea Intellectual Property Office (KIPO),
: <http://www.kipo.go.kr/en/> .

Ministry of Culture, Sports and Tourism (MCST),
: <http://www.mcst.go.kr/english/index.jsp> .

1/7/2011,

162

	<i>Elia Kalama s</i>	Olives	엘리아갈라마따스
	<i>Masticha Chiou</i>	Gum	마스티하히우
	<i>Feta</i>	Cheese	페따
	<i>Ouzo</i>	Spirit	우조
	<i>Retsina</i>	Wine	레찌나
	<i>Samos</i>	Wine	사모스

46

8.

A 1/7/2011

[Type text]

9.

Procurement Service (PPS).		Public
\$ 3,000,000.	\$ 100,000	

PPS	10%	
	PPS	

PPS		KONEPS
(Korea Online e-Procurement System),		

KONEPS		
	KONEPS	
		KONEPS

KONEPS

4

(GPA)

(WTO).

www.pps.go.kr/english.

Defense Acquisition Program Administration (DAPA).

<http://www.dapa.go.kr/eng/index.jsp>.

https://www.d2b.go.kr/English/jsp/pcb/Hi_PCB_Main.jsp.

10.

(1-7-2012)

T

[Type text]

- : 1.
- 2.
- 3.

(One Stop Shop),

Investment Consulting Center
 Tel.: 1600-7119, Fax: (02) 3497-1611
 Languages spoken: English, Japanese, Korean
 Address: IKP Building, 2nd fl., 300-6, Yeomgok-dong, Seocho-gu, Seoul

KOTRA

Korea Business Center (KOTRA)

: 6 5, 115 28,
 : +30) 210 6561596 / 210-6544181
 : +30) 210 6543508
 e-mail: kotraath@gmail.com
<http://www.kotra.gr/index.jsp>

- 1. Invest Korea (KOTRA)
- 2.
- 3.
- 4.
- 5.

, ,
 . ,
 , .
 ,
 .
 14 ,
 .
 ,
 ,
 ,
 16 , 3
 (, ,).

.
 Foreigners Land Acquisition Act.
 ,
 ,
 ,
 .
 4% 10%,
 ,
 .

90 .
 , 90
 ,
 Center KOTRA, Investment Consulting
 Consulting Center, Investment

11.

[Type text]

, Seoul, Busan, Incheon, Daegu Daejon,

45% 27%

\$ 3,5
CJ, Hyundai, GS, Lotte, and Nongsusan.

2011 16% 30.000 98% \$ 27,6

6,8 \$ 2,2

.
 ,
 . . , , ,
 . , ,
 ,
 .
 ,
 . , ,
 ,
 .
 ,
 .

10%, 50% 150%,
 .
 .
 :
 - : 10%. 15-18%

- _____ : 15%
- _____ : 15%
- (_____) _____ : 15%
- supermarkets : 15-20%
- _____ : 20-35%
- _____ : 10-12%

,
 .
 ,
 .
 :
 - ,
 -

46% , 20%, door to door, internet door to door supermarkets. noodles,

Soju. Makoli.

15% (

[Type text]

1/2/2015

\$5

Boutiques.

30-40 , conditioners,

(cosmeceuticals).

highly functional products

telemarketing

telemarketing,

telemarketing
35%

telemarketing

3-4

:

)

)

)

)

)

)

12.

H

Association)

:

(Korea International Trade

\$ 1

HS 680221

			\$ 1000	%
<u>2000</u>	51,658		30,098	57.6
<u>2001</u>	82,595		41,890	39.2
<u>2002</u>	129,803		59,770	42.7
<u>2003</u>	143,210		74,170	24.1
<u>2004</u>	131,867		67,931	-8.4
<u>2005</u>	168,636		96,691	42.3
<u>2006</u>	166,776		110,638	14.4
<u>2007</u>	193,337		139,605	26.2
<u>2008</u>	183,409		143,226	2.6
<u>2009</u>	156,700		110,291	-23
<u>2010</u>	154,411		109,402	-0.8
<u>2011</u>	164,322		110,014	0.6
<u>2012</u>	132,403		88,431	-19.6
<u>2013</u>	97,094		72,428	-18.1
<u>2014</u>	107,222		75,344	4
<u>2015</u>	96,787		64,501	-14.4

HS 680221

Rank	Country	2014		2015	
		\$ 1000	Inc. Rate	\$ 1000	Inc. Rate
0	Total Sum	75,344	4	64,501	-14.4
1	China	44,096	2.2	39,050	-11.4
2	Oman	10,265	36.9	8,148	-20.6
3	Italy	6,771	-4.5	4,172	-38.4
4	Indonesia	3,076	20.9	2,484	-19.3
5	Turkey	3,081	6.4	2,177	-29.3
6	Greece	2,160	-17.3	1,977	-8.4
7	Spain	1,393	-4.6	1,822	30.9
8	Egypt	862	-24.5	1,551	79.9
9	Pakistan	529	7.2	1,358	157

HS 680221

[Type text]

	\$ 1000	%
<u>2000</u>	820	232.9
<u>2001</u>	1,136	38.5
<u>2002</u>	1,688	48.6
<u>2003</u>	2,133	26.4
<u>2004</u>	2,008	-5.9
<u>2005</u>	1,795	-10.6
<u>2006</u>	2,245	25.1
<u>2007</u>	1,214	-45.9
<u>2008</u>	1,574	29.7
<u>2009</u>	556	-64.7
<u>2010</u>	1,019	83.3
<u>2011</u>	1,117	9.7
<u>2012</u>	1,692	51.5
<u>2013</u>	2,612	54.4
<u>2014</u>	2,160	-17.3
<u>2015</u>	1,977	-8.4

HS 680291

Year	Weight	Value	Inc. Rate
<u>2000</u>	13,240,324	7,899	112.1
<u>2001</u>	13,986,184	8,932	13.1
<u>2002</u>	39,019,584	14,899	66.8
<u>2003</u>	38,408,681	19,356	29.9
<u>2004</u>	41,432,539	20,892	7.9
<u>2005</u>	40,661,453	23,822	14
<u>2006</u>	46,742,581	30,695	28.9
<u>2007</u>	96,094,457	64,527	110.2
<u>2008</u>	134,434,790	94,097	45.8
<u>2009</u>	167,112,654	104,329	10.9
<u>2010</u>	139,284,786	99,162	-4.9
<u>2011</u>	79,601,918	61,770	-37.7
<u>2012</u>	59,960,794	43,941	-28.9
<u>2013</u>	35,817,790	27,142	-38.2
<u>2014</u>	37,486,979	33,380	23
<u>2015</u>	36,990,483	27,556	-17.4

HS 680291

Rank	Country	2014		2015	
		Value	Inc. Rate	Value	Inc. Rate
0	Total Sum	33,380	23	27,556	-17.4
1	China	19,517	18.9	15,111	-22.6
2	Italy	2,155	-43	4,335	101.1
3	Oman	2,049	184.7	1,701	-17

[Type text]

4	Turkey	2,124	81.2	1,587	-25.2
5	Greece	2,832	513.4	1,071	-62.2
6	Pakistan	699	0	1,048	49.9
7	Spain	1,367	7.5	1,008	-26.3
8	Indonesia	437	-32.6	348	-20.4
9	Egypt	406	19	342	-15.8

HS 680291

Year	Value	Inc. Rate
2000	150	1,219.30
2001	279	85.9
2002	99	-64.6
2003	368	271.8
2004	561	52.6
2005	191	-65.9
2006	3	-98.2
2007	142	4,032.60
2008	544	282.1
2009	337	-38
2010	35	-89.7
2011	454	1,203.10
2012	714	57.3
2013	462	-35.3
2014	2,832	513.4
2015	1,071	-62.2

:

HS 2515

Year	Weight	Value	Inc. Rate
2000	1,853,568	503	-11.8
2001	1,973,361	348	-30.9
2002	5,523,212	882	153.5
2003	2,991,917	790	-10.4
2004	2,162,572	880	11.5
2005	4,047,286	1,022	16.1
2006	1,148,278	655	-35.9
2007	2,197,516	944	44.2
2008	3,124,444	1,526	61.6
2009	1,973,986	658	-56.8
2010	876,042	685	4.1
2011	3,284,000	1,169	70.6
2012	3,941,890	1,245	6.5
2013	8,036,146	2,114	69.8
2014	11,778,406	3,768	78.3

[Type text]

<u>2015</u>	14,355,075	2,799	-25.7
-------------	------------	-------	-------

HS 2515

Rank	Country	2014		2015	
		Value	Inc. Rate	Value	Inc. Rate
0	Total Sum	3,768	78.3	2,799	-25.7
1	China	265	224.5	608	129.3
2	Pakistan	132	293	403	206.2
3	Egypt	138	1,183.60	397	188.1
4	Italy	973	147.7	277	-71.5
5	Turkey	575	1.9	263	-54.3
6	Portugal	181	-52.6	249	37.8
7	Macedonia	73	-	209	185.7
8	Greece	491	434.3	153	-68.9
9	Guatemala	-	-	61	-

HS 2515

	\$ 1000	%
<u>1999</u>	-	-100
<u>2003</u>	3	-
<u>2004</u>	43	1,564.60
<u>2005</u>	-	-100
<u>2006</u>	11	-
<u>2007</u>	-	-100
<u>2009</u>	0	-
<u>2010</u>	-	-100
<u>2012</u>	20	-
<u>2013</u>	92	362.2
<u>2014</u>	491	434.3
<u>2015</u>	153	-68.9

1/7/2011

FTA ó ,

6 (,

«

»,

« ».

[Type text]

Arla.

FTA,

« »,

2011

HS 0406

Year	Weight	Value	Inc. Rate
2000	30,534,782	70,638	28.1
2001	34,452,829	88,057	24.7
2002	31,984,095	85,129	-3.3
2003	35,782,291	93,829	10.2
2004	41,350,524	120,197	28.1
2005	44,032,322	143,572	19.5
2006	44,032,347	146,262	1.9
2007	49,470,818	178,992	22.4
2008	47,384,734	238,876	33.5
2009	49,024,113	189,918	-20.5
2010	60,970,757	258,749	36.2
2011	76,220,998	357,928	38.3
2012	77,506,107	359,718	0.5
2013	85,068,939	403,041	12
2014	97,215,309	497,416	23.4
2015	111,522,322	501,741	0.9

HS 0406

Rank	Country	2014		2015	
		Value	Inc. Rate	Value	Inc. Rate
0	Total Sum	497,416	23.4	501,741	0.9
1	U.S.A	301,316	60	250,749	-16.8
2	N. Zealand	50,522	-50.6	63,614	25.9

[Type text]

3	Germany	25,362	72.5	54,619	115.4
4	France	31,374	46.3	34,390	9.6
5	Australia	27,043	0.8	32,703	20.9
6	Italy	17,613	22.7	18,583	5.5
7	Denmark	10,860	-8	12,502	15.1
8	Poland	3,685	85.2	10,555	186.5
9	Netherlands	14,742	99.1	10,310	-30.1

HS 0406

E

Year	Weight	Value	Inc. Rate
2002	10	0	-
2003	68	-	-100
2006	120	1	-
2007	486	1	8.1
2008	94	6	499.7
2009	467	1	-84.7
2010	4,948	7	626.7
2011	6,880	48	616.1
2012	6,831	66	36.2
2013	18,372	73	11.1
2014	35,160	232	217.7
2015	23,765	316	36

2

HS 200570

Year	Weight	Value	Inc. Rate
2000	1,048,733	1,054	12.4
2001	910,213	930	-11.8
2002	1,110,328	1,080	16.2
2003	1,122,718	1,147	6.2
2004	1,349,983	1,610	40.3
2005	1,150,165	1,352	-16

[Type text]

2006	1,581,119	2,198	62.5
2007	1,408,430	2,452	11.6
2008	1,310,003	2,639	7.7
2009	1,446,028	2,581	-2.2
2010	1,542,232	2,736	6
2011	2,064,034	3,617	32.2
2012	2,327,468	3,712	2.6
2013	2,539,983	4,312	16.2
2014	2,844,207	5,016	16.3
2015	3,107,887	4,776	-4.8

HS 200570

Rank	Country	2014		2015	
		Value	Inc. Rate	Value	Inc. Rate
0	Total Sum	5,016	16.3	4,776	-4.8
1	Spain	4,028	12.6	3,619	-10.2
2	Italy	478	149.6	612	28.1
3	U.S.A	387	-2.3	428	10.8
4	Greece	98	-11.2	85	-13
5	France	13	-41	22	69.1
6	Mexico	10	517.3	8	-21.3
7	Austria	-	-	0	-
8	U. Kingdom	2	-75.5	0	-89.6
9	Israel	0	-99.1	0	24

HS 200570

E

	Value	Inc. Rate
1994	10	-
1995	20	98.8
1996	38	87.1
1997	0	-99.7
1998	-	-100.0
1999	1	-
2000	1	-9.3
2001	-	-100.0
2002	2	-
2003	-	-100.0
2005	3	-

[Type text]

2006	36	1,186.7
2007	61	70.1
2008	57	-6.0
2009	35	-39.1
2010	32	-7.5
2011	96	197.5
2012	109	14.0
2013	110	1.3
2014	98	-11.2
2015	85	-13.0

FTA.

2013

pest risk analysis

HS 081050

	2012	2013
	20,232	19,442
	28,945	20,065
	49,177	39,507

: Ministry of Agriculture, Forestry and Rural Affairs

[Type text]

HS 081050

Year	Weight	Value	Inc. Rate
1996	6,522,269	12,249	-
1997	7,999,288	14,500	18.4
1998	3,470,718	5,192	-64.2
1999	4,383,064	7,521	44.9
2000	5,228,240	8,647	15
2001	6,417,161	9,272	7.2
2002	10,232,826	16,373	76.6
2003	12,849,443	22,528	37.6
2004	23,100,500	44,679	98.3
2005	26,751,451	53,313	19.3
2006	32,111,652	62,736	17.7
2007	34,657,595	69,831	11.3
2008	29,085,185	57,228	-18
2009	27,375,669	53,178	-7.1
2010	28,514,633	56,508	6.3
2011	29,757,028	72,450	28.2
2012	28,944,864	66,977	-7.5
2013	20,064,657	43,473	-35.1
2014	19,589,563	52,502	20.8
2015	23,821,995	56,915	8.4

HS 081050

Rank	Country	2015		2016(1-08)	
		Value	Inc. Rate	Value	Inc. Rate
0	Total Sum	56,915	8.4	43,963	-9.6
1	N. Zealand	42,823	-1.5	35,006	-2.6
2	Chile	12,949	74.6	8,693	-24.8
3	Italy	1,070	-29.4	179	-83.3
4	Japan	-	-	55	-
5	France	66	-35.5	31	-53.9
6	U.S.A	7	517.4	0	-

:

HS 080510

Year	Weight	Value	Inc. Rate
2000	99,016,886	63,361	137
2001	92,482,939	77,200	21.8

[Type text]

2002	102,653,745	88,088	14.1
2003	144,880,723	112,631	27.9
2004	154,444,270	136,744	21.4
2005	123,047,902	120,377	-12
2006	124,495,143	123,064	2.2
2007	77,671,308	108,013	-12.2
2008	107,887,604	110,941	2.7
2009	71,221,162	79,198	-28.6
2010	110,055,142	130,944	65.3
2011	141,961,310	170,177	30
2012	173,942,528	219,887	29.2
2013	152,714,438	194,874	-11.4
2014	98,370,634	164,765	-15.4
2015	111,743,161	173,234	5.1

HS 080510

Rank	Country	2014		2015(1~12)	
		Value	Inc. Rate	Value	Inc. Rate
0	Total Sum	164,765	-15.5	173,234	5.1
1	U.S.A	156,281	-16	163,001	4.3
2	South Africa	4,290	4.9	4,760	11
3	Spain	1,333	443.8	2,163	62.2
4	Chile	2,638	-21.6	1,748	-33.7
5	Australia	223	-77.1	1,562	600

lifestyle

2015 2015 \$ 1,7

25.8% \$ 694

1/7/2011,

8

15/3/2012.

highly functional products (cosmeceuticals).

Seoul International Cosmetics & Beauty Expo, www.cosmobeautyseoul.com

HS 33

Year	Weight	Value	Inc. Rate
2000	34,039,639	480,977	40.4
2001	47,324,017	600,722	24.9
2002	51,855,218	732,590	22
2003	49,782,282	726,989	-0.8
2004	50,117,226	726,020	-0.1
2005	57,388,345	790,932	8.9
2006	60,419,443	897,891	13.5
2007	65,747,083	991,334	10.4
2008	70,562,319	1,081,181	9.1
2009	67,386,311	1,051,827	-2.7
2010	72,921,805	1,265,393	20.3
2011	79,852,374	1,460,346	15.4
2012	83,714,840	1,494,762	2.4
2013	86,684,283	1,546,452	3.5
2014	83,999,796	1,692,942	9.5
2015	93,966,103	1,719,082	1.5

[Type text]

HS 33

Rank	Country	2014		2015(1~12)	
		Value	Inc. Rate	Value	Inc. Rate
0	Total Sum	1,692,942	9.5	1,719,082	1.5
1	U.S.A	496,613	15.1	488,655	-1.6
2	France	353,625	16.9	343,903	-2.7
3	Japan	215,547	-9.1	221,076	2.6
4	Thailand	68,409	12.2	77,818	13.8
5	Pr.China	62,642	8.8	67,486	7.7
6	Italy	69,071	2.2	66,937	-3.1
7	Germany	58,887	6	60,947	3.5
8	U. Kingdom	59,499	9	54,500	-8.4
9	Singapore	42,717	18.8	47,672	11.6

HS 33

E

Year	Value	Inc. Rate
1991	9	-
1992	-	-100
1997	30	-
1998	17	-43
1999	113	551.4
2000	34	-70.1
2001	60	76.4
2002	304	411.1
2003	92	-69.7
2004	741	704.1
2005	1,549	109
2006	1,686	8.8
2007	752	-55.4
2008	738	-1.8
2009	520	-29.5
2010	379	-27.2
2011	149	-60.7
2012	349	134.5
2013	203	-42
2014	551	172.2

[Type text]

2015	694	25.8
----------------------	-----	------

HS 3401

Year	Weight	Value	Inc. Rate
2000	600	0	-
2001	4,777	2	567
2002	914	12	721.1
2003	4,740	4	-69.3
2004	3,232	12	206.9
2005	3,038	13	13.4
2006	1,051	9	-31
2007	312	15	59.2
2008	104	6	-61.1
2009	26	2	-60
2010	221	0	-97.3
2011	549	3	5,083.6 0
2012	710	5	60.8
2013	11,094	11	118.7
2014	6,934	66	497.7
2015	<u>31,832</u>	44	-33.8

HS 3401

Rank	Country	2014		2015(1~12)	
		Value	Inc. Rate	Value	Inc. Rate
0	Total Sum	117,552	16.9	117,462	-0.1
1	U.S.A	46,371	22.6	43,165	-6.9
2	Malaysia	16,775	5.7	21,820	30.1
3	China	9,707	23.5	9,663	-0.4
4	France	7,647	5.1	7,989	4.5
5	Indonesia	13,454	1.4	7,516	-44.1
6	U. Kingdom	7,826	47	6,665	-14.8

[Type text]

7	Japan	3,764	16.9	4,842	28.6
8	Thailand	3,022	35.9	3,094	2.4
9	Canada	1,529	46.2	2,480	62.2

HS 3401 E

Year	Value	Inc. Rate
1997	0	-
1998	1	850.8
1999	-	-100
2000	0	-
2001	2	567
2002	12	721.1
2003	4	-69.3
2004	12	206.9
2005	13	13.4
2006	9	-31
2007	15	59.2
2008	6	-61.1
2009	2	-60
2010	0	-97.3
2011	3	5,083.6 0
2012	5	60.8
2013	11	118.7
2014	66	497.7
2015	44	-33.8

HS 2401

Year	Weight	Value	Inc. Rate
2000	12,313,974	73,870	-15.2
2001	13,812,733	66,881	-9.5
2002	19,991,992	81,768	22.3
2003	33,687,237	115,962	41.8
2004	37,890,712	115,032	-0.8
2005	30,457,407	102,245	-11.1
2006	39,265,898	131,397	28.5

[Type text]

2007	42,828,130	154,802	17.8
2008	56,056,519	223,496	44.4
2009	51,877,032	242,882	8.7
2010	51,469,742	247,477	1.9
2011	42,010,999	204,866	-17.2
2012	54,546,357	251,811	22.9
2013	59,503,111	308,029	22.3
2014	49,512,207	274,664	-10.8
2015	44,109,965	223,516	-18.6

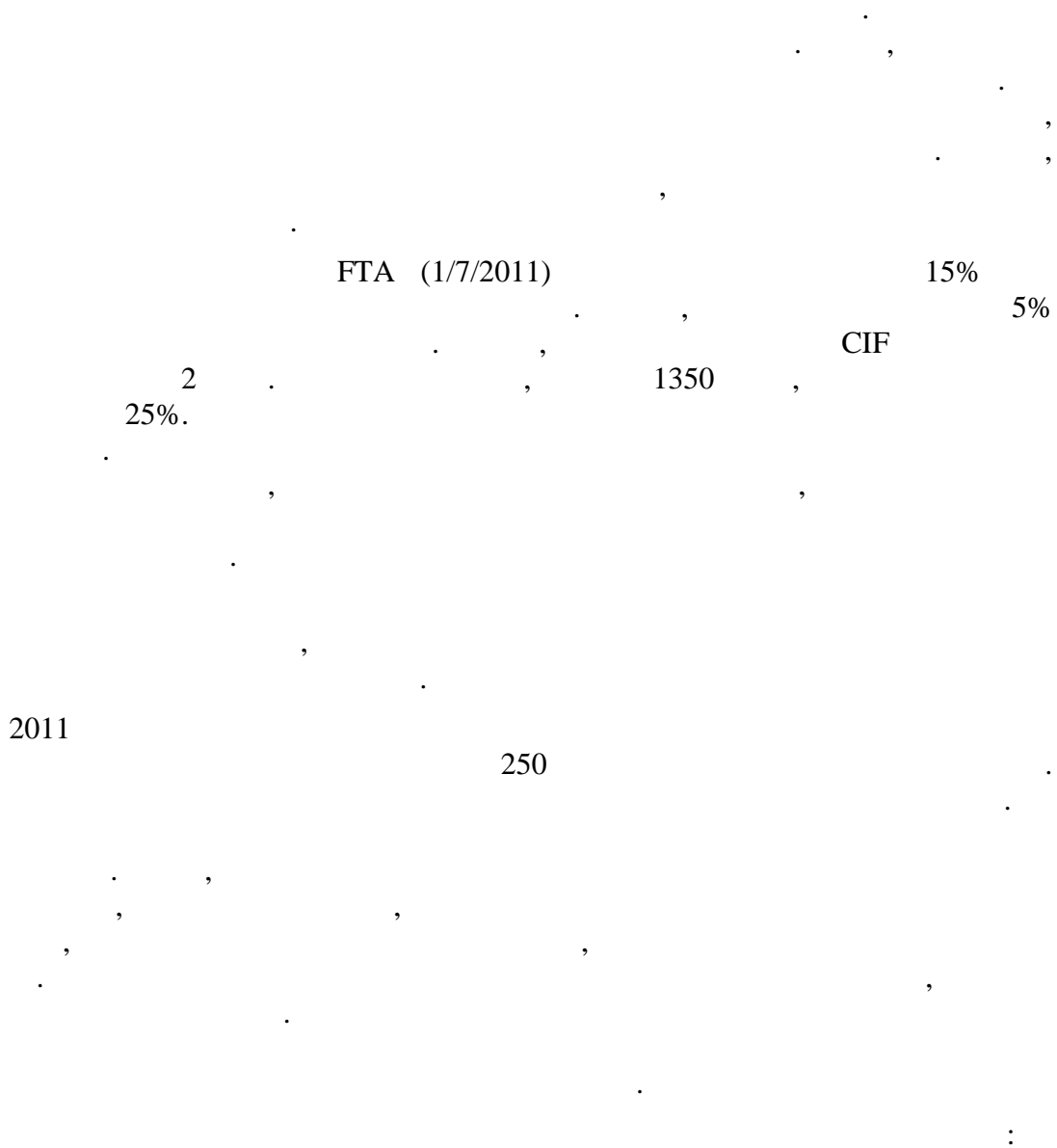
Rank	Country	2014		2015(1~12)	
		Value	Inc. Rate	Value	Inc. Rate
0	Total Sum	274,664	-10.8	223,516	-18.6
1	Brazil	70,287	7	56,770	-19.2
2	Tanzania	22,885	18	28,243	23.4
3	U.S.A	34,538	-4.5	27,423	-20.6
4	India	43,196	25.3	26,308	-39.1
5	Philippines	4,099	-61.1	17,909	337
6	Germany	28,518	25.7	16,458	-42.3
7	Malawi	10,300	-79.5	14,392	39.7
8	China	10,034	-3.5	6,104	-39.2
9	Turkey	8,319	-9.1	5,591	-32.8

E

Year	Value	Inc. Rate
2000	9,765	-26.6
2001	16,348	67.4
2002	17,273	5.7
2003	24,610	42.5
2004	28,020	13.9
2005	21,036	-24.9
2006	20,426	-2.9
2007	11,408	-44.1
2008	23,910	109.6
2009	19,462	-18.6
2010	13,006	-33.2
2011	11,235	-13.6
2012	5,870	-47.7
2013	9,202	56.8
2014	8,154	-11.4

[Type text]

2015	2,396	-70.6
----------------------	-------	-------



HS 4303

Year	Weight	Value	Inc. Rate
2000	229,324	18,647	79.4
2001	402,536	26,622	42.8
2002	444,747	47,772	79.5
2003	311,367	46,300	-3.1
2004	270,230	53,020	14.5
2005	345,916	77,730	46.6
2006	354,991	99,790	28.4
2007	305,981	76,141	-23.7
2008	282,608	58,842	-22.7
2009	413,134	53,085	-9.8

[Type text]

2010	750,839	94,911	78.8
2011	720,261	125,410	32.1
2012	556,942	95,818	-23.6
2013	516,942	90,196	-5.9
2014	513,076	94,532	4.8
2015	615,590	96,390	2

HS 4303

Rank	Country	2014		2015(1-12)	
		Value	Inc. Rate	Value	Inc. Rate
0	Total Sum	94,532	4.8	96,390	2
1	China	42,013	-1.2	57,829	37.6
2	Italy	21,858	5.3	25,328	15.9
3	France	4,758	39	5,482	15.2
4	Turkey	2,308	226.5	1,683	-27.1
5	U.S.A	2,727	245	1,508	-44.7
6	Hong Kong	11,834	-28.5	856	-92.8
7	Germany	355	14.6	750	110.9
8	Greece	561	-10.9	632	12.6
9	Viet Nam	6,760	129.9	568	-91.6

HS 4303

E

Year	Value	Inc. Rate
2000	123	-
2001	163	32.6
2002	471	189.2
2003	165	-65
2004	46	-72.2
2005	75	62.7
2006	108	45.1
2007	194	79.1
2008	307	58.4
2009	123	-59.9
2010	441	258.3
2011	1,429	224.3

[Type text]

2012	2,031	42.1
2013	630	-69
2014	561	-10.9
2015	632	12.6

HS 4302

Year	Weight	Value	Inc. Rate
2000	1,413,440	62,450	-13.4
2001	1,347,058	52,699	-15.6
2002	1,269,184	54,687	3.8
2003	772,239	40,329	-26.2
2004	737,737	37,265	-7.6
2005	779,707	47,957	28.7
2006	705,654	58,414	21.8
2007	523,252	49,494	-15.3
2008	392,629	36,059	-27.1
2009	635,753	45,332	25.7
2010	870,361	81,112	78.9
2011	1,123,300	131,234	61.8
2012	852,810	102,631	-21.8
2013	811,604	109,411	6.6
2014	765,134	85,229	-22.1
2015	519,696	57,419	-32.6

HS 4302

Rank	Country	2014		2015(1-12)	
		Value	Inc. Rate	Value	Inc. Rate
0	Total Sum	85,229	-22.1	57,419	-32.6
1	China	53,027	-27.8	33,686	-36.5
2	Spain	11,109	-1	5,404	-51.4
3	Turkey	6,745	61	4,985	-26.1
4	Italy	2,292	8.5	3,281	43.1
5	Greece	2,979	-55.7	1,766	-40.7
6	U.S.A	1,750	-6.9	1,542	-11.9
7	U. Kingdom	1,123	-46.8	1,245	10.9
8	Denmark	321	-56.3	1,178	267.5
9	Finland	497	-63	967	94.5

[Type text]

HS 4302

Year	Value	Inc. Rate
2000	1,049	756.9
2001	1,364	30.1
2002	2,734	100.5
2003	1,150	-57.9
2004	1,028	-10.6
2005	2,959	187.9
2006	4,595	55.3
2007	3,480	-24.3
2008	1,252	-64
2009	1,611	28.6
2010	5,623	249.1
2011	11,188	99
2012	5,392	-51.8
2013	6,720	24.6
2014	2,979	-55.7
2015	1,766	-40.7

2005 114
 3
 \$ 54.2

2000
 24% 2013, 33% 2014 55% 2015,
 \$ 1.2

Seoul Food and OTE,

[Type text]

<http://seoulfood.or.kr/eng/main.asp>.

HS 1509

Year	Weight	Value	Inc. Rate
2000	1,602,053	4,372	45.7
2001	2,309,780	5,697	30.3
2002	3,142,510	8,035	41.1
2003	6,652,335	20,199	151.4
2004	15,078,318	52,613	160.5
2005	29,096,135	113,786	116.3
2006	17,731,911	89,340	-21.5
2007	12,650,769	53,784	-39.8
2008	10,973,858	49,493	-8
2009	9,288,992	32,013	-35.3
2010	11,318,247	37,061	15.8
2011	13,390,389	44,763	20.8
2012	9,851,757	32,860	-26.6
2013	10,135,431	43,467	32.3
2014	14,880,379	57,137	31.5
2015	12,159,294	54,234	-5.1

HS 1509

Rank	Country	2014		2015(1~12)	
		Value	Inc. Rate	Value	Inc. Rate
0	Total Sum	57,137	31.4	54,234	-5.1
1	Spain	37,018	30.1	35,359	-4.5
2	Italy	17,282	42	14,635	-15.3
3	Turkey	874	-37.7	1,517	73.6
4	Greece	780	32.9	1,209	54.9
5	U.S.A	12	-42.8	369	3,103.0 0
6	PLO	341	60.9	369	8.2
7	France	110	16.7	252	128.7
8	Germany	194	399.2	202	4.3
9	Israel	146	1,061.9 0	139	-4.4

HS 1509

E

[Type text]

Year	Value	Inc. Rate
<u>1998</u>	1	-
<u>1999</u>	12	2,009.0 0
<u>2000</u>	55	356.6
<u>2001</u>	60	8.9
<u>2002</u>	248	316.1
<u>2003</u>	629	153.2
<u>2004</u>	1,662	164.4
<u>2005</u>	1,303	-21.6
<u>2006</u>	841	-35.4
<u>2007</u>	893	6.2
<u>2008</u>	652	-26.9
<u>2009</u>	532	-18.5
<u>2010</u>	439	-17.4
<u>2011</u>	586	33.3
<u>2012</u>	473	-19.3
<u>2013</u>	587	24.2
<u>2014</u>	780	32.9
<u>2015</u>	1,209	54.9

HS 03

Year	Weight	Value	Inc. Rate
<u>2000</u>	644,422,406	1,229,89 7	17.8
<u>2001</u>	943,514,663	1,465,03 3	19.1
<u>2002</u>	1,067,641,454	1,676,06 5	14.4
<u>2003</u>	1,121,653,090	1,737,48 9	3.7
<u>2004</u>	1,138,793,089	1,958,38 7	12.7
<u>2005</u>	1,104,930,387	2,030,06 7	3.7
<u>2006</u>	1,218,704,744	2,361,89 0	16.4
<u>2007</u>	1,240,982,909	2,628,61 0	11.3
<u>2008</u>	1,003,801,971	2,531,36 3	-3.7
<u>2009</u>	1,016,622,133	2,335,31	-7.7

[Type text]

		0	
2010	1,081,799,901	2,775,159	18.8
2011	1,197,924,382	3,413,904	23
2012	1,119,117,532	3,218,487	-5.7
2013	1,061,344,754	3,136,336	-2.5
2014	1,169,260,427	3,636,037	15.9
2015	1,215,976,330	3,719,704	2.3

HS 03

Rank	Country	2014		2015(1~12)	
		Value	Inc. Rate	Value	Inc. Rate
0	Total Sum	3,636,037	15.9	3,719,704	2.3
1	China	1,014,392	17.4	1,005,935	-0.8
2	Russia	669,341	13.9	702,273	4.9
3	Viet Nam	486,807	30.7	441,831	-9.2
4	U.S.A	217,433	6.2	229,362	5.5
5	Norway	181,376	53.2	214,694	18.4
6	Japan	91,151	-4.4	108,255	18.8
7	Thailand	103,217	40.7	105,747	2.5
8	Taiwan	103,905	-8.4	100,966	-2.8
9	Chile	101,792	21.8	94,221	-7.4

HS 03

E

Year	Value	Inc. Rate
1991	66	-
1992	-	-100
2001	2	-
2002	-	-100
2004	0	-
2005	18	14,938.30
2006	887	4,815.80
2007	1,616	82.2
2008	3,190	97.3
2009	2,972	-6.8
2010	2,902	-2.4
2011	888	-69.4
2012	1,973	122.2
2013	643	-67.4
2014	55	-91.4
2015	3	-93.8

[Type text]

FTA ó 50%, FTA ó 8 1/7/2011.

HS 200870

Year	Weight	Value	Inc. Rate
2000	7,427,405	5,832	15.5
2001	9,273,469	6,887	18.1
2002	11,151,604	7,799	13.2
2003	8,399,596	6,542	-16.1
2004	5,921,323	5,440	-16.8
2005	7,196,489	6,365	17
2006	8,561,382	7,787	22.4
2007	9,362,562	9,023	15.9
2008	6,995,316	7,714	-14.5
2009	3,458,984	3,778	-51
2010	3,740,241	4,287	13.5
2011	4,558,470	6,315	47.3
2012	4,947,885	7,555	19.6
2013	4,921,377	7,696	1.9
2014	4,848,043	8,456	9.9
2015	5,160,572	8,339	-1.4

HS 200870

Rank	Country	2014		2015(1-12)	
		Value	Inc. Rate	Value	Inc. Rate
0	Total Sum	8,456	9.9	8,339	-1.4
1	Thailand	3,082	29.4	2,907	-5.7
2	China	2,480	2.5	2,359	-4.9
3	Greece	1,112	-22.4	1,979	78
4	France	331	110.2	387	16.9
5	Spain	560	63	262	-53.2

[Type text]

6	U.S.A	178	9.2	225	26.4
7	South Africa	316	95.8	211	-33.2
8	Japan	-	-	4	-
9	Italy	6	32.2	3	-53

HS 200870

E

Year	Value	Inc. Rate
2000	999	116.6
2001	1,513	51.5
2002	1,938	28.1
2003	1,604	-17.2
2004	1,088	-32.2
2005	1,795	65
2006	1,618	-9.9
2007	1,235	-23.6
2008	351	-71.6
2009	113	-67.8
2010	52	-54.2
2011	349	574.5
2012	648	85.8
2013	1,433	121.1
2014	1,112	-22.4
2015	1,979	78

O

2012

HS 2009

Year	Weight	Value	Inc. Rate
2000	57,723,419	95,195	9.4
2001	64,195,339	86,566	-9.1
2002	72,317,731	101,912	17.7
2003	69,656,372	105,116	3.1
2004	70,695,024	99,429	-5.4
2005	73,898,465	103,390	4
2006	71,363,572	117,058	13.2
2007	71,007,686	147,852	26.3
2008	64,164,050	144,348	-2.4

[Type text]

2009	56,474,604	119,064	-17.5
2010	64,212,403	128,577	8
2011	68,051,710	176,672	37.4
2012	71,834,218	203,146	15
2013	69,414,186	190,767	-6.1
2014	58,042,948	153,041	-19.8
2015	64,463,616	155,625	1.7

HS 2009

Rank	Country	2014		2015	
		Value	Inc. Rate	Value	Inc. Rate
0	Total Sum	153,041	-19.8	155,625	1.7
1	U.S.A	55,536	-38.7	59,377	6.9
2	Chile	26,122	-13.4	23,093	-11.6
3	Taiwan	10,964	3.7	10,489	-4.3
4	China	9,235	-14.8	9,683	4.9
5	Germany	5,742	10.3	7,052	22.8
6	Israel	5,431	-2.5	6,456	18.9
7	Spain	4,743	33.7	6,449	36
8	Thailand	3,849	-3.2	4,866	26.4
9	Turkey	5,762	91.8	4,615	-19.9

HS 2009

E

35	Greece	3,432	287.3	2,470	-28
Year	Value	Inc. Rate			
1995	0	-			
1996	15	62,650.00			
1997	-	-100			
2006	7	-			
2007	-	-100			
2009	0	-			
2010	0	107.3			
2011	0	168.2			
2012	2,253	987,854.80			
2013	1,354	-39.9			
2014	2,464	82			
2015	1,054	-57.2			

[Type text]

\$ 4,2 ,

HS 30

Year	Weight	Value	Inc. Rate
2000	20,758,045	546,501	20.9
2001	24,393,844	718,710	31.5
2002	29,875,319	881,291	22.6
2003	33,484,111	1,077,102	22.2
2004	35,768,298	1,401,565	30.1
2005	37,242,070	1,651,295	17.8
2006	39,605,394	2,225,938	34.8
2007	47,514,963	2,757,568	23.9
2008	48,481,523	2,993,993	8.6
2009	47,646,888	3,036,303	1.4
2010	52,136,280	3,476,314	14.5
2011	55,973,474	3,890,292	11.9
2012	60,482,094	4,153,411	6.8
2013	64,273,735	4,244,280	2.2
2014	64,280,391	4,861,261	14.5
2015	67,674,373	4,761,165	-2.1

HS 30

Rank	Country	2014		2015	
		Value	Inc. Rate	Value	Inc. Rate
0	Total Sum	4,861,261	14.5	4,761,165	-2.1
1	U.S.A	1,080,599	17.8	1,064,247	-1.5
2	Germany	721,936	19.9	692,762	-4
3	Switzerland	295,113	4.6	322,175	9.2
4	France	296,571	10.2	280,022	-5.6
5	Italy	316,988	12.8	267,758	-15.5
6	Japan	246,217	13.3	261,031	6
7	Turkey	87,997	8.1	247,864	181.7
8	Ireland	244,024	46.8	244,840	0.3
9	U. Kingdom	262,727	-5.2	243,160	-7.4

[Type text]

10	Spain	165,388	14.5	124,313	-24.8
11	China	124,847	6.6	120,764	-3.3
12	Puerto Rico	142,125	8.2	119,404	-16
13	Belgium	130,390	-5.4	87,473	-32.9
14	Singapore	117,235	52.2	87,265	-25.6
15	Sweden	93,503	10.4	77,905	-16.7
16	Netherland	68,966	7.9	74,930	8.7
17	Denmark	93,331	21.4	69,638	-25.4
18	Australia	36,170	84.5	61,779	70.8
19	India	62,791	31.9	53,899	-14.2
20	Canada	54,500	4.2	51,276	-5.9
21	Austria	60,747	23	47,678	-21.5
22	Finland	28,372	-4.1	29,726	4.8
23	Poland	25,871	237.2	25,677	-0.7
24	Taiwan	8,276	3.4	17,327	109.4
25	Indonesia	14,944	-40.7	9,772	-34.6
26	Mexico	17,822	-2.3	9,579	-46.2
27	Norway	11,689	-23.4	9,486	-18.8
28	Israel	4,438	291	8,866	99.8
29	Dominican Rep.	7,566	33	8,074	6.7
30	Brazil	4,832	-15.6	6,689	38.4
31	N. Zealand	3,607	-13.5	5,478	51.9
32	Slovenia	4,498	14.4	3,949	-12.2
33	Bulgaria	1,399	-9.3	3,277	134.1
34	Cambodia	3,029	28.9	2,677	-11.6
35	Greece	3,432	287.3	2,470	-28

HS 30

Year	Value	Inc. Rate
2000	2	-

[Type text]

2001	0	-96.5
2002	-	-100
2003	34	-
2004	539	1,485.50
2005	117	-78.3
2006	686	486.5
2007	68	-90.1
2008	126	85.6
2009	82	-35.1
2010	127	55.2
2011	124	-2.4
2012	514	314
2013	886	72.5
2014	3,432	287.3
2015	2,470	-28

13.

:

1. Korea International Trade Association (KITA): <http://www.kita.org>
2. Korean Chamber of Commerce and Industries (KCCI): <http://english.korcham.net/>.
3. Korean Importers Association (KOIMA): <http://www.import.or.kr/>.

: Ms Rachel Hwang,

Tel. 82-2-792-1581 (. 223), 82-2-798-5461, research@koima.or.kr

4. COEX: <http://coex.co.kr/eng/index.asp>
5. SETEC: <http://www.setec.or.kr/main.do>
6. KINTEX: http://www.kintex.com/client/_eng/index.jsp
7. BEXCO: <http://www.bexco.co.kr>
8. Korea Trade Investment Promotion Agency (KOTRA):
9. <http://english.kotra.or.kr/wps/portal/dken>
10. The Korean Commercial Arbitration Board (KCAB): <http://www.kcab.or.kr>

:

Hana Bank: <http://www.hanabank.co.kr>**Woori Bank:** <http://www.wooribank.com>**Kookmin Bank:** <http://www.kookmin.co.kr>**Korea Exchange Bank:** <http://www.keb.co.kr/english>**Nonghyup Bank:** <http://banking.nonghyup.com>**SC First Bank:** <http://www.scfirstbank.com>**Shinhan Bank:** <http://www.shinhan.com>

:

Chosun Ilbo: <http://english.chosun.com>**Dong A Ilbo:** <http://www.donga.com> , newsroom@donga.com**Hankook Ilbo:** <http://www.hankooki.com>**Hankyoreh Shinmun:** <http://www.hani.co.kr>

[Type text]

Joong-ang Ilbo: <http://www.joins.com> , helpdesk@joins.com
Hanguk Kyungje: <http://www.hankyung.com> , choijc@hankyung.com
Korea Herald: <http://www.koreaherald.co.kr> , cyhwang@heraldm.com
Korea Times: <http://www.koreatimes.co.kr> , webmaster@koreatimes.co.kr
The Kukmin Daily: <http://www.kukminilbo.co.kr>
Kyunghyang Shinmun: <http://www.kyunghyang.com> , ad1@khan.co.kr
Maeil Kyungje: <http://www.mk.co.kr> , mkmaster@mk.co.kr
Munhwa Ilbo: <http://www.munhwa.co.kr> , gywee@munhwa.com
Segye Ilbo: <http://www.segye.com> , parksoo@segye.com
Seoul Shinmun: <http://www.seoul.co.kr> , sch8@seoul.co.kr
Seoul Kyungjae Shinmun: <http://economy.hankooki.com> , adinfo@hankooki.com